



## Presenting 2 and 3 BHK Apartments at Piyush Heights

Considered for desire, enjoyment,  
affection, opulence, enjoyment  
and household.

And ready to move in.



## Enrichment of life.

Here, at this place, you can live your life with your dreams. You can see your kids relishing the most valuable prompt of their life. You can keep your family in a secure place after getting her own dream house for getting her own dream house for which she ever wanted for. Therefore, you will have every essential thing with in your reach that is vigorous to you. Eventual moments of life will be simply achievable adjacent your place.



# Life novelty outstanding difference of life, within the nearby place..

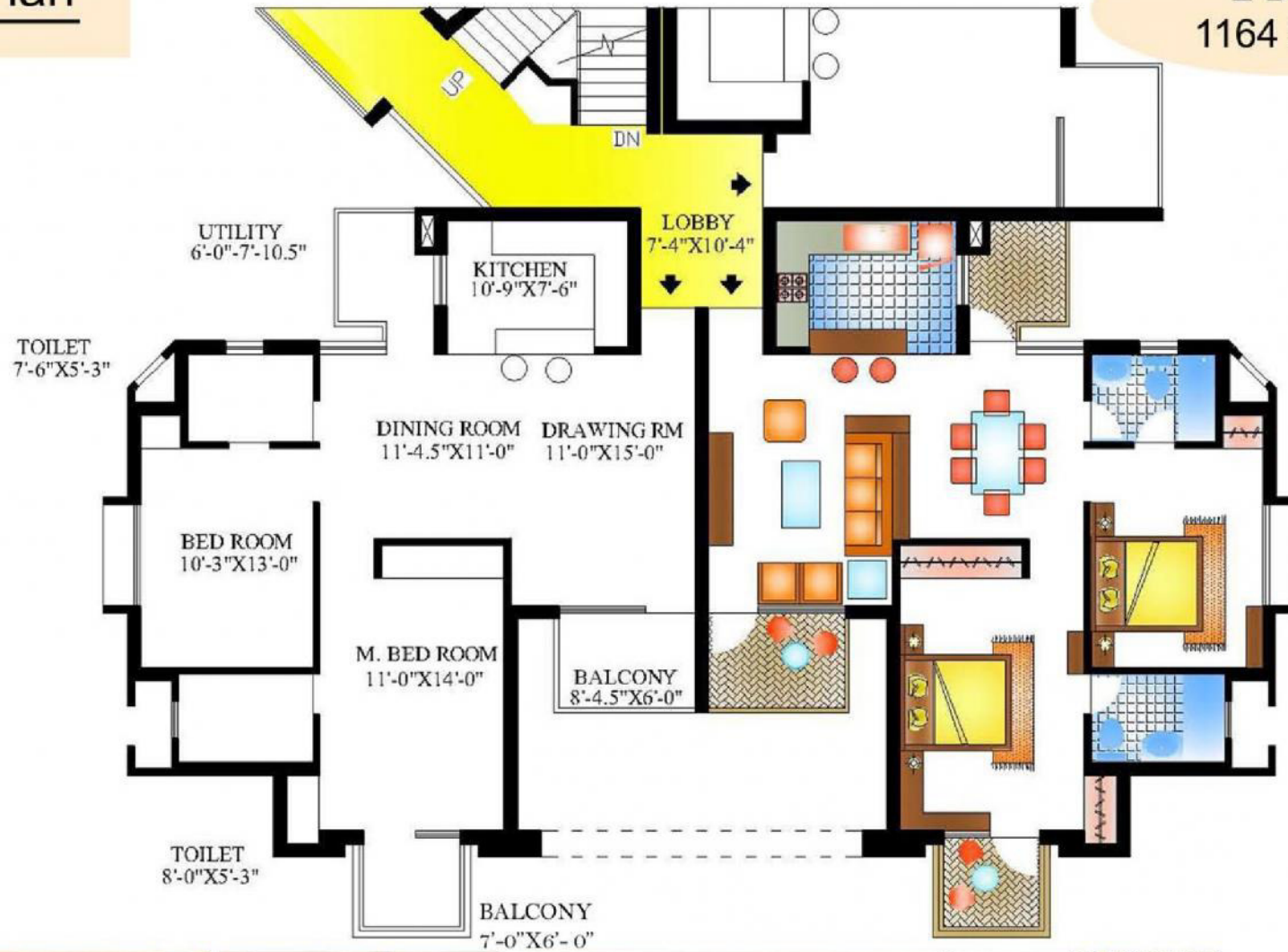
Airport is found just 40 kms drive from the location, Railway station and Hospital is 5 kms from the location, City Centre and ATM is located only 4 kms and school is located with in 3 kms of distance. Only 5 minutes' drive from proposed Noida express way. Nearly 8 kms South Delhi.

Piyush Heights is a well- known diversified project which is spread over 17.85 acres of landscaped greens, located at sec- 89, Neharpar in greater Faridabad offering ranges from 2Bhk, 3Bhk, 3+1Bhk apartments and penthouse.

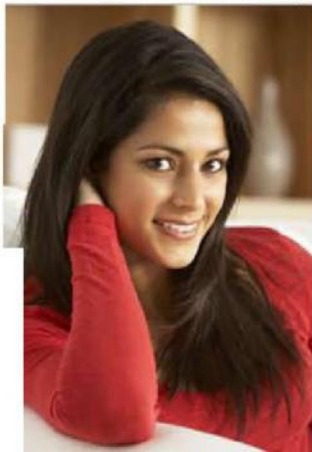


# Floor Plan

2 BHK  
1164 SQFT



UNIT PLAN

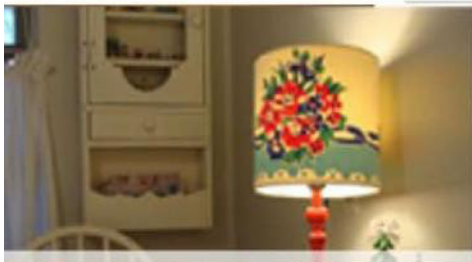


# Floor Plan

3 BHK  
1446 SQFT



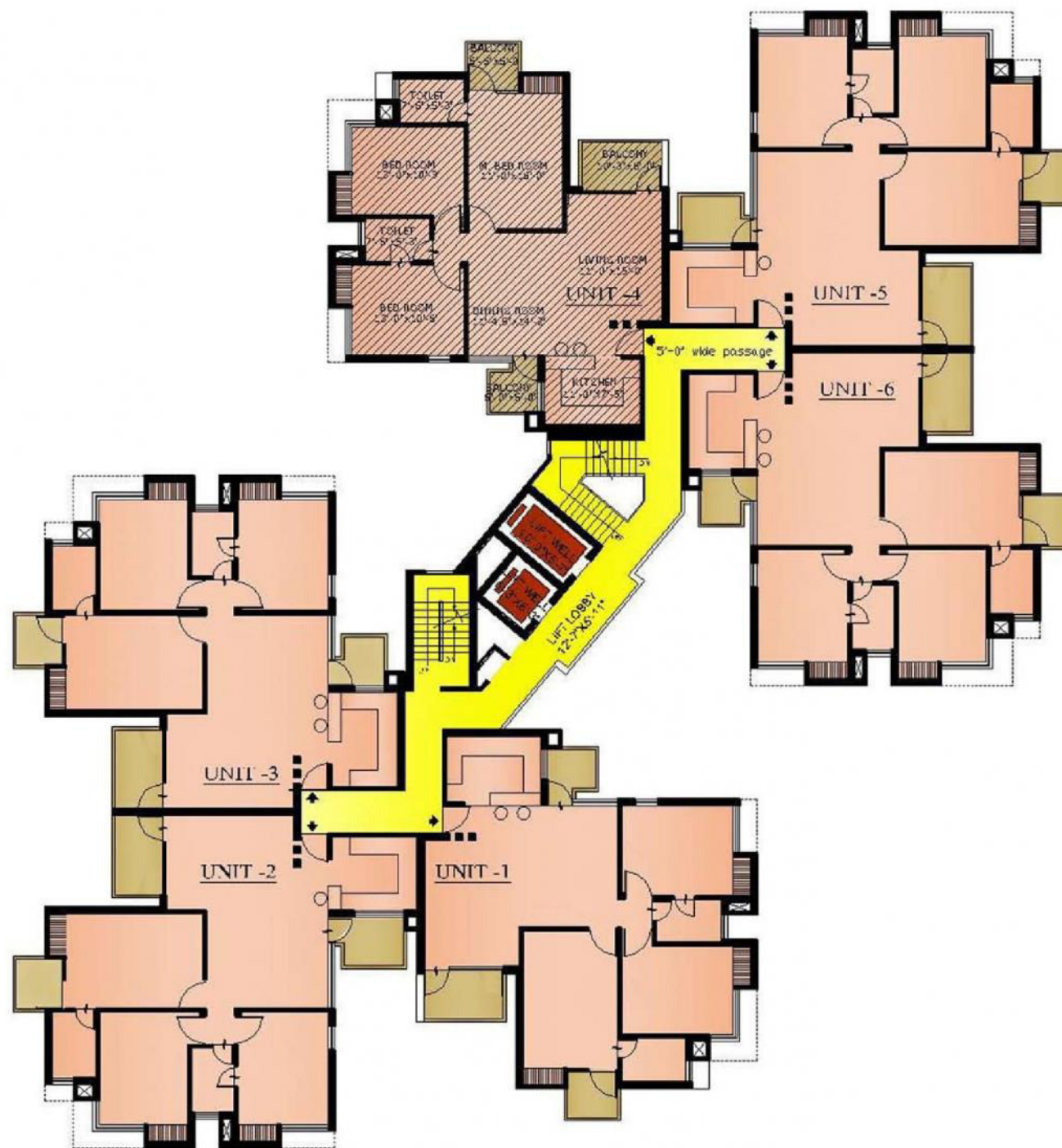
## CLUSTER PLAN



# Floor Plan



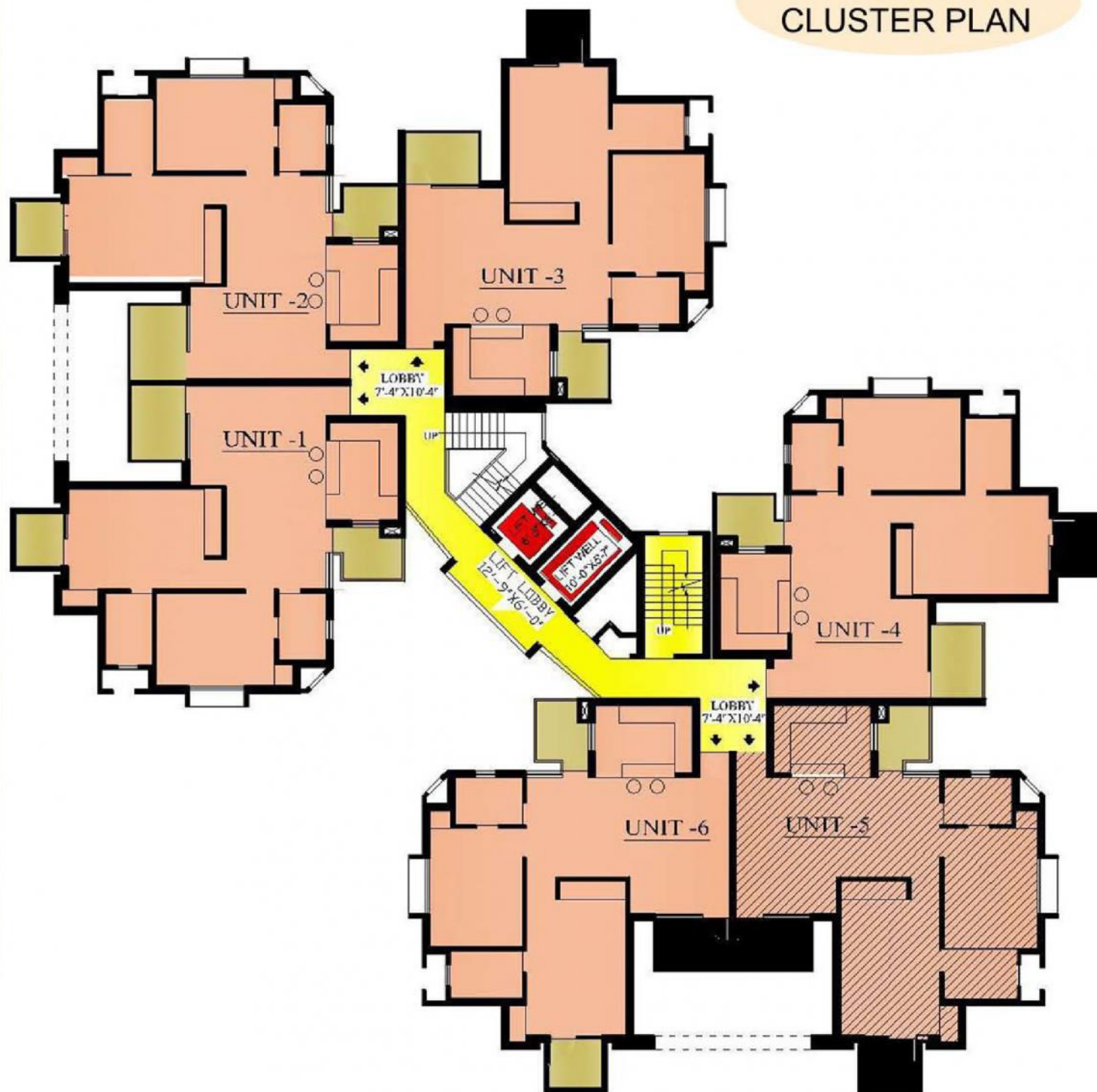
## 3 BEDROOM CLUSTER PLAN



## Floor Plan



## 2 BEDROOM CLUSTER PLAN



# SITE PLAN PIYUSH HEIGHT SECTOR- 89, FARIDABAD



Extrabagant world - Supereme Quality, Serenity  
can be achiveable at one place



Location map

Location of this property is one of the central attractions for this project. A 17.5 acre residential Project, offers 2 and 3 BHK apartments with exeptional fitting and premium finishes.



# Proposed Specifications :

## TYPE OF CONSTRUCTION

RCC framed Structure (Eartquake resistant).

## EXTERIOR FINISH

Permanent finish including Stone cladding Composite. Aluminum sheets, Reflective glass Curtain walls and texture paint finishes.

## INTERNAL FINISHES

Stone / Vitrified tile/stainless steel/textured paint. Covering on the wall in common Spaces. Plastered and OBD painted walls in shops.

## DOORS & WINDOWS

Provision for frame less glass with fitting and U clips.

## FLOORING

Polished and flamed finished granite / vitrified tiles in Common areas.

## BASEMENT

Combination of chequered tiles with Vacuum dewatering coucrete.

## TOILETS

Provision of normal water pipes in all toilets grante , Vitrified and ceramic tiles flooring combination/walls, Sanitary /chinaware in white colored of Standard make. Heigh quality cp fitting and accessories, electrical hand dryers to be provied, censor operated Urinals and wash basins.

## VENTILATION

Basement Ventilation of parking and service areas, Kitchen and other ventilation on above floors.

## LIGHTING

Facade Lighting, street lighting, Advt. and glow signage, all the required internal and task Lighting, Provision of light in shop area.

## AIR CONDITION

Centralized Air-condition.

## ELECTRICAL SYSTEM

Uninterrupted power supply with 100% Power Back- up DG sets of SIS electrical wiring and outlets separate metering of each shops.

